



# Go Green with 2N® SmartCom PRO

A System for the Collection of Important Energy Data



**KEEPFOCUS**



The response  
of those involved

*"The 2N® SmartCom PRO has enabled KeepFocus to rethink our previous business model and to develop a new business model allowing our customers to benefit from receiving near real time data as well as a lower installation cost, which in turn provides our company with a valuable competitive advantage."*

*Palle Haderslev, CTO KeepFocus*

## SUCCESS STORY

### About our customer

KeepFocus is a Danish knowhow company committed to helping large private and public enterprises and municipalities monitoring their consumption patterns by gathering and visualizing data. Our mission is to eliminate wastage - both in traditional areas such as electricity, water and heating, but also in other areas based on our partners' focus, interests and goals. Unlike traditional energy-efficiency companies, the KeepFocus model is complementing the monitoring and visualization of consumption data with behavior-based principles as known from motivational psychology, nudging and gamification in order to motivate and encourage further engagement.

### What led KeepFocus to change?

*„We often deliver some sort of data aggregation units as part of the projects, but as the wireless meters started gaining success on the market we realized we needed a unit capable of reading these new meters. At the same time we were looking for ways to lower our customers' entry costs, and the 2N® SmartCom PRO met both requirements.“* **Palle Haderslev, CTO KeepFocus**

### Benefits:

- Centralized device administration
- Wireless solution
- Significant cost savings
- Supports a wide range of industrial standards
- Secure communication
- Remote control of switching elements
- Remote reading of input values
- Programmable functions

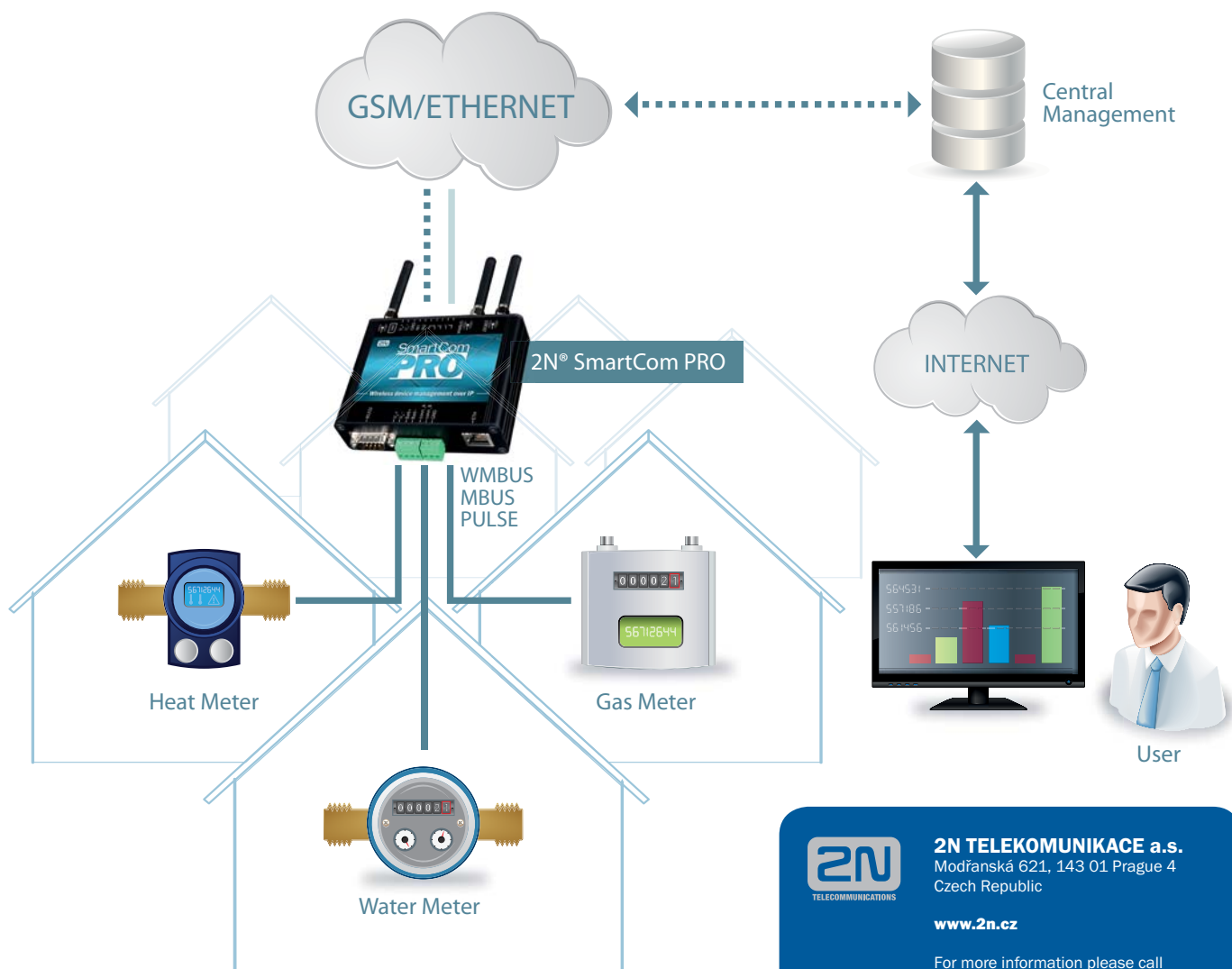
## Why did the customer choose 2N® SmartCom PRO?

The initial goal was to supply KeepFocus with such a data logger/gateway unit, which will provide widest possible range of attachable endpoint devices, will be able to operate and send the data on real time basis either through Ethernet or GSM and will be easy to implement both on the HW and SW (protocols, FW updates...) side.

KeepFocus could benefit from 2N's ability to react with flexibility and to design the 2N® SmartCom PRO exactly according to the specifications needed in order to fulfill demanding technical requirements. Whole production, control and shipping procedure is set up to make 2N® SmartCom PRO implementation to KeepFocus' solutions easy and fast.

## Product description

The 2N® SmartCom PRO is a complete M2M (Machine-to-Machine) solution developed for the wireless centralized management of endpoint devices (such as energy meters, sensors, switches) and remote systems (such as vending machines, lifts). Full remote control and administration of your devices is ensured by creating secure, protocol-independent data transmission in the GSM/UMTS network.



**2N TELEKOMUNIKACE a.s.**  
Modřanská 621, 143 01 Prague 4  
Czech Republic

[www.2n.cz](http://www.2n.cz)

For more information please call  
**+ 420 261 301 500**  
or email us at  
[sales@2n.cz](mailto:sales@2n.cz).